

ARL–Academy for Territorial Development in the Leibniz Association

**Presentation to the conference
„Ordenación del Territorio en España frente al reto demográfico,
el cambio climático y la transición energética”**

Valencia, 4 de noviembre de 2022

Who we are and what we do

- The ARL is an independent institution for the spatial sciences under public law and is based in Hanover
- As a Leibniz institution, it is funded jointly by the Federal Government and the federal states due to its supraregional significance and its work in the interest of national science policy
- Parts of the ARL are the academy (140 elected members) and the network of experts from research and practice (140 members and 455 external experts). The Headquarters has 42 employees.
- Focus on national and international developments of spatial structures, their causes and effects, and policy and planning options for their management

Our approach

We are working...

- > network-based
- > inter- and transdisciplinary
 - > co-design
 - > co-production
 - > co-dissemination
- > product-oriented
- > In temporary working groups (international, national, regional)

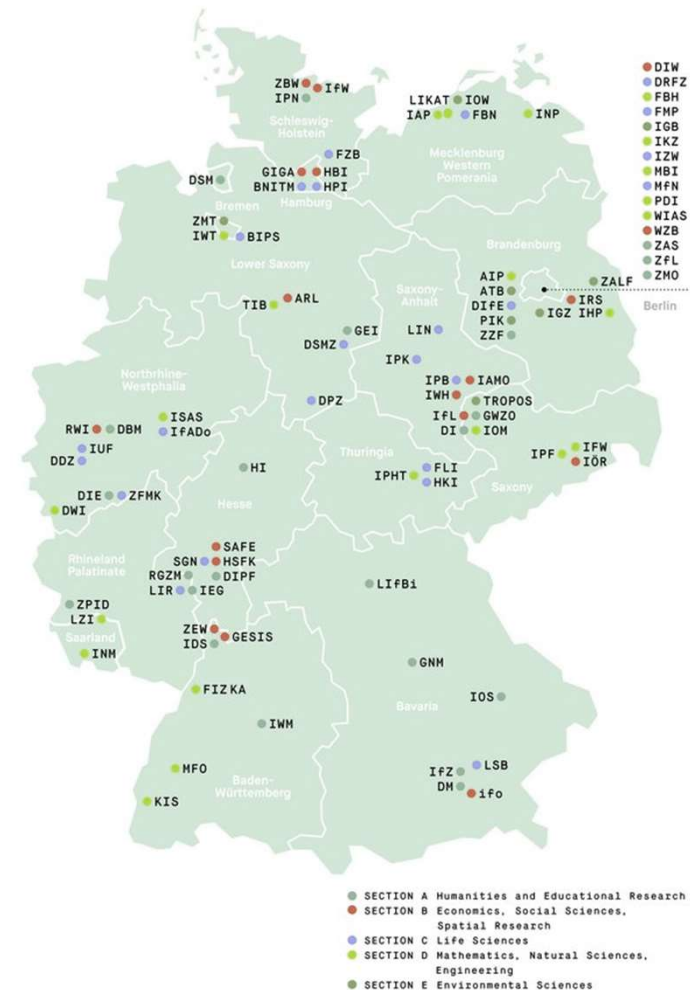
Short history

- 1935: Foundation of the “Reich Working Group for Spatial Research” (RAG); close connection to the Nazi regime
- 1946: Re-founded after the war as the Academy for Spatial Research and Planning (ARL)
- 1953: ARL acquires the rights of a legal person under public law; state supervision by the Lower Saxony state government
- 1991: ARL becomes member of the “Leibniz-Association
- 2019: Change of name to "Academy for Territorial Development in the Leibniz Association (ARL)

Theoria cum praxi: the ARL as part of the Leibniz Association

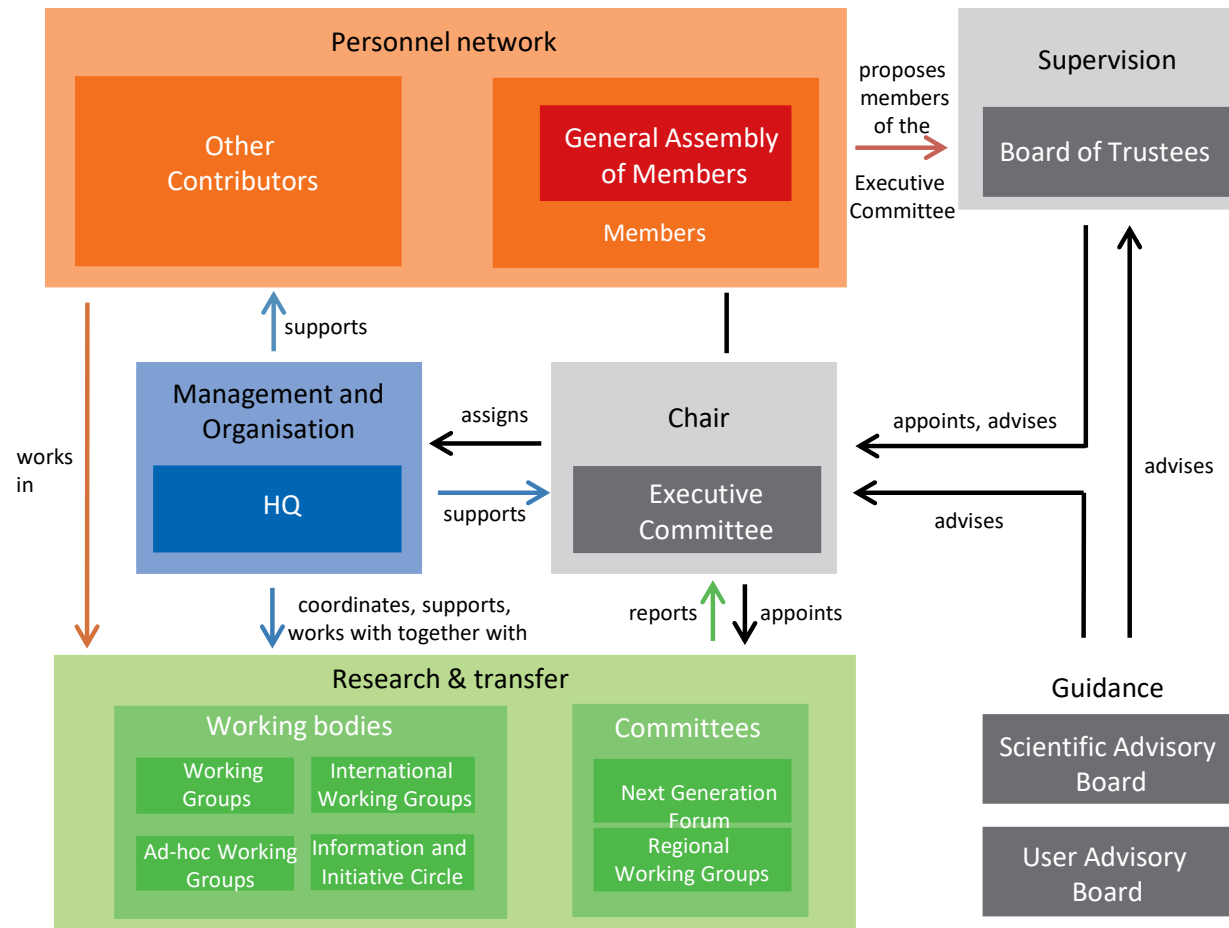
97 independent research institutions that range in focus from natural, engineering and environmental sciences to economics, **spatial** and social sciences and the humanities

- > issues of social, economic and ecological relevance
- > applied research and interdisciplinarity
- > knowledge transfer
- > independent evaluation procedure



Source: Leibniz Association

The Academy



Source: own representation

Research fields



I: Demographic and
socio-economic
transformation



II: Environment, energy,
climate change



III: Planning concepts
and processes

Cross-sector activities

Research at the ARL

The uniqueness of the Academy is drawn from close voluntary cooperation between **researchers** from the spatial and planning sciences and **practitioners** of spatial planning and development. Joint, cross- and transdisciplinary cooperation brings together the knowledge of experts from both academia and practice in working bodies:

- Working Groups (national and international)
- Ad-hoc-Working Groups
- Regional Working Groups / European Working Groups
- Information and Initiative Group (national and international)
- Editorial Committees

Working bodies (1)

- **Working Groups** (AK): selected, thematically focused research questions are tackled in countrywide Working Groups with a maximum lifespan of three years. The choice of topic and the establishment of the working group are based on a specific research concept. Participation in the Working Groups is based on responses to Calls for Membership.
- **International Working Groups** (IAK): for specific internationally relevant issues the ARL has begun to establish an increasing number of International Working Groups, either alone or in cooperation with partner institutes. The working language is usually English and the majority of members come from other countries.

Working bodies (2)

- **Ad-hoc Working Groups** (AAK): re formed to use recent research findings to produce action-oriented recommendations on current issues and problems in spatial development and planning, particularly with the aim of providing policy advice.
- **Regional Working Groups** (LAG): are ongoing forums for discussion between academia and practice on the level of the German federal states and concentrate on more regionally focused research. The ARL has set up seven Regional Working Groups.

Working bodies (3)

- **European Working Groups** (EWG): function in analogy to the Regional Working Groups on a European level, i.e. have a more regional focus. There is currently one EWG active in the Alpine Space.
- **Information and Initiative Groups** (IIK): are set up by the Steering Committee of the ARL to address fields of spatial planning that are of long-term relevance. They work continuously in an intensive dialogue between practice and research and produce regular recommendations for both fields. There are currently four IIKS.
- **Editorial Committees** (RA): are tasked with publishing handbooks and reference guides on urban and spatial development regularly.

Publications (1)

Handwörterbuch der Stadt- und Raumentwicklung

The Compendium of Urban and Regional Development

- is directed at interested academics and practitioners
- all German language articles can be downloaded for free, also a selection of English language articles



Publications (2)

Forschungsberichte der ARL (Research Reports of the ARL)

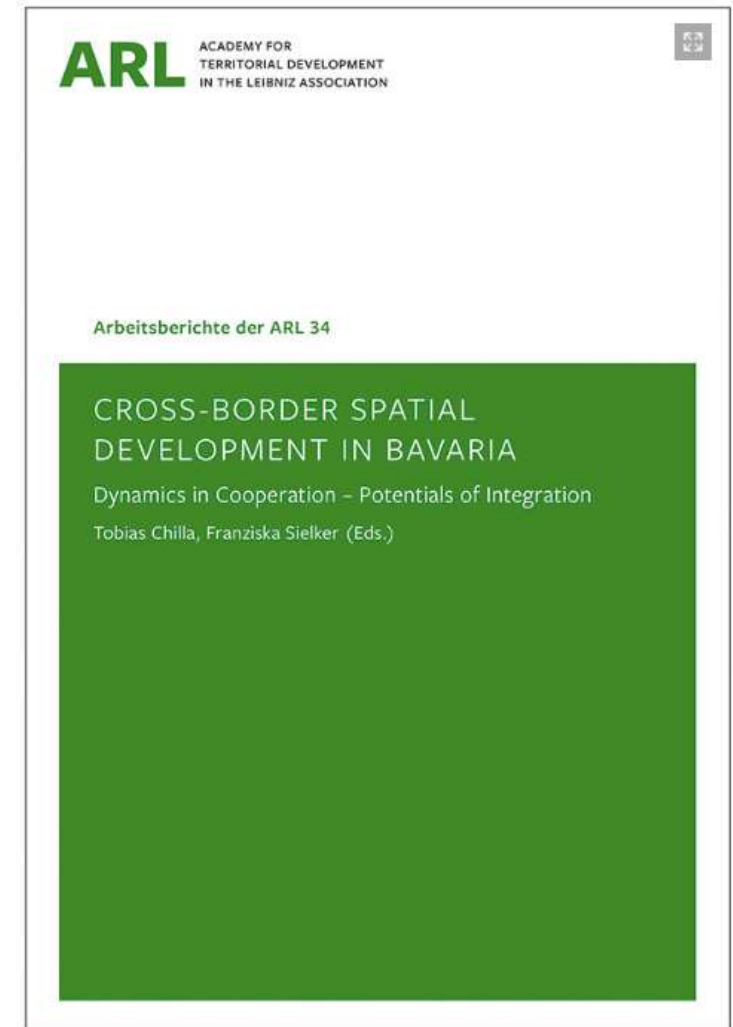
- findings of the fundamental and applied interdisciplinary research undertaken by the working groups and the results of individual research projects
- primarily aimed at academia (research and teaching) but also offer up-to-date and informed support for planning practice.



Publications (3)

Arbeitsberichte der ARL (Working Reports of the ARL)

- (interim) findings of application-oriented scientific discussions of the working groups.
- particularly aimed at planning practice and primarily offer topical and practical support and promote discussion within the Academy.

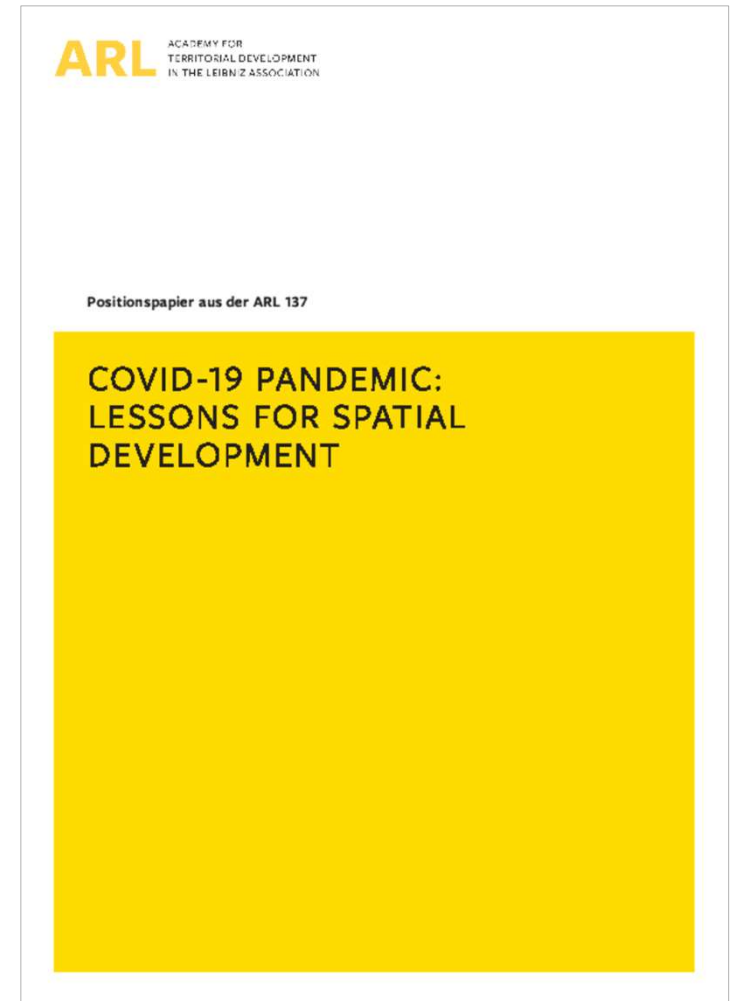


Publications (4)

Positionspapiere (Position Papers)

- dealing with current issues of spatial development on the national and European levels.
- primarily aimed at decision-makers in the political and administrative spheres.

See some examples on the next picture



Publications (5)

Some examples of recently published Position Papers

- Mit Regionalplanung die Zukunft gestalten
- Lignite planning, structural change and coal phase-out in Germany
- Risikobasierter Hochwasserschutz durch Regionalplanung
- COVID-19 pandemic: Lessons for spatial development
- Raumwirksamkeit der Digitalisierung
- Regionalplanung für einen raumverträglichen Ausbau von Freiflächen-Photovoltaikanlagen (FPV)
- Safeguarding open spaces in the Alpine region
- Onlinehandel und Raumentwicklung – Neue Urbanität für alte Zentren!

Publications (6)

Nachrichten der ARL

News from the ARL

- is published three times a year and has always a specific focus
- reports on current topics of spatial development
- targets those contributing to the work of the Academy, decision-makers in the political and administrative spheres, professionals in the field, and interested citizens



Publications (7)

Raumforschung und Raumordnung **Spatial Research and Planning**

- forum for topics and debates relevant to the field of spatial sciences
- published Gold Open Access jointly by ARL, Ifl, ILS, IÖR and IRS.

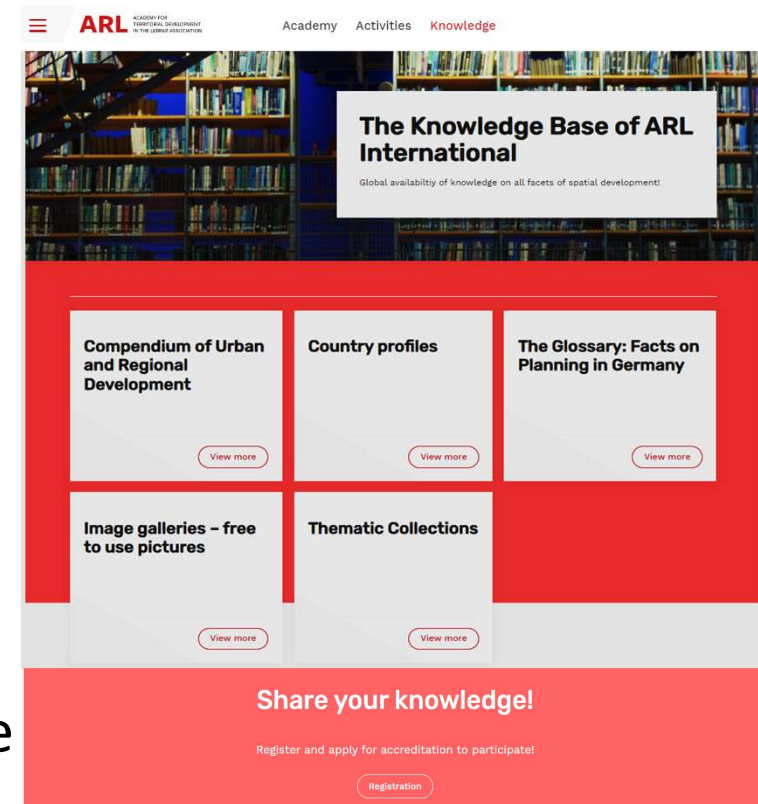


Internationalisation

- > Expansion of international network activities (IAK, EWG)
- > Internationalisation of the member structure
- > International career development (summer schools, Next Generation Forum)
- > Policy consulting on an international level

The international knowledge and communication platform

- > Regular updates on (international) network activities
- > Large knowledge-base with planning-related expertise
- > Sharing of knowledge between scientists and practitioners worldwide



The knowledge base on arl-international.com



/Knowledge_Base

Thank you for your attention!

arl-net.de

arl-international.com

For enquiries: priebs@geographie.uni-kiel.de

ARL – Academy for Territorial Development in the Leibniz Association · Vahrenwalder Straße 247 · 30179 Hannover
arl@arl-net-de / international@arl-net.de