

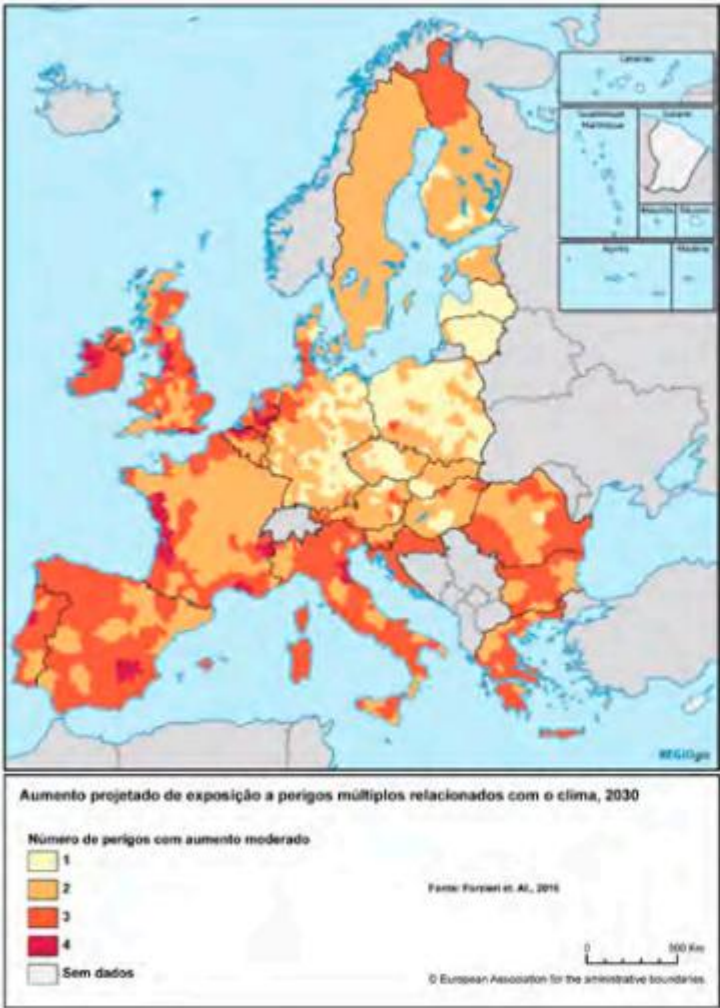
#TA2030 PILOT ACTION

climate change adaptation and resilience
through **landscape transition**



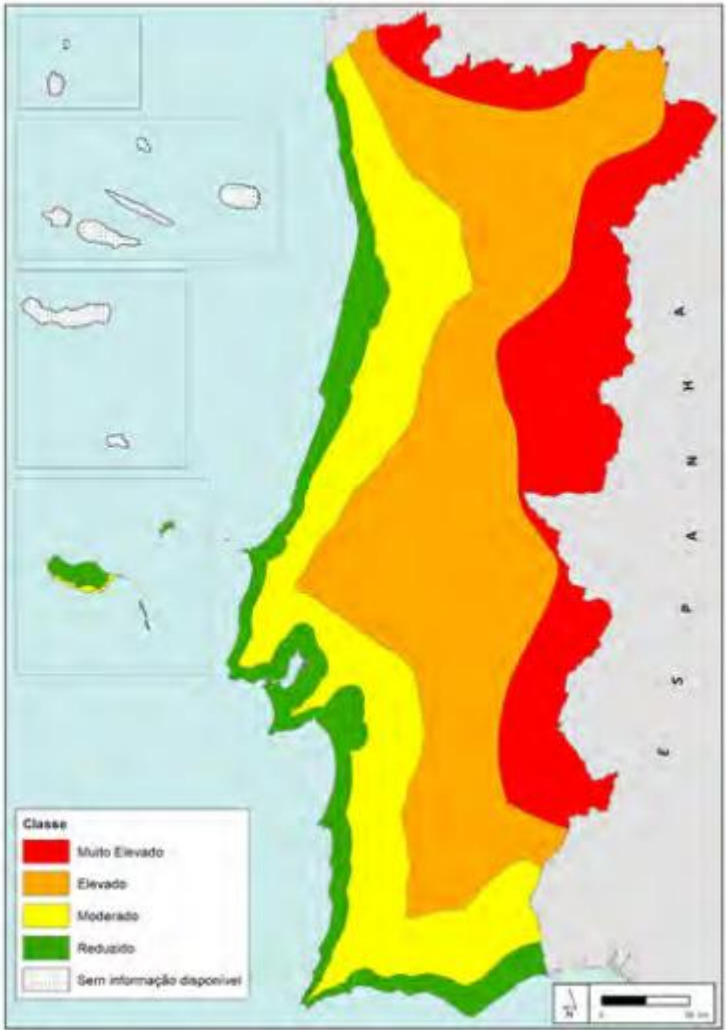
pilot action background- National Spatial Planning Policy Programme (PNPOT, 2019)

Projected increase to Multi-hazard exposure under climate change 2030 (Moderate increase)



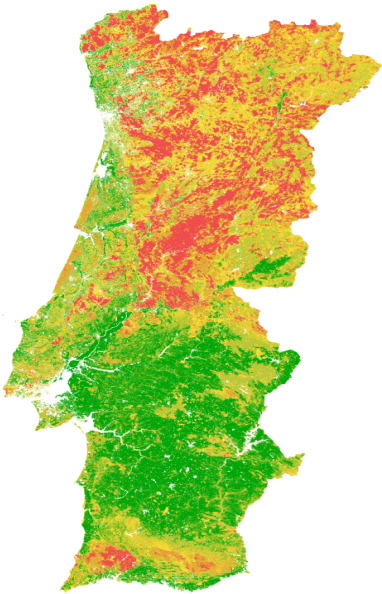
Fonte: Forzieri et. Al., 2016

Projected exposure to heat waves



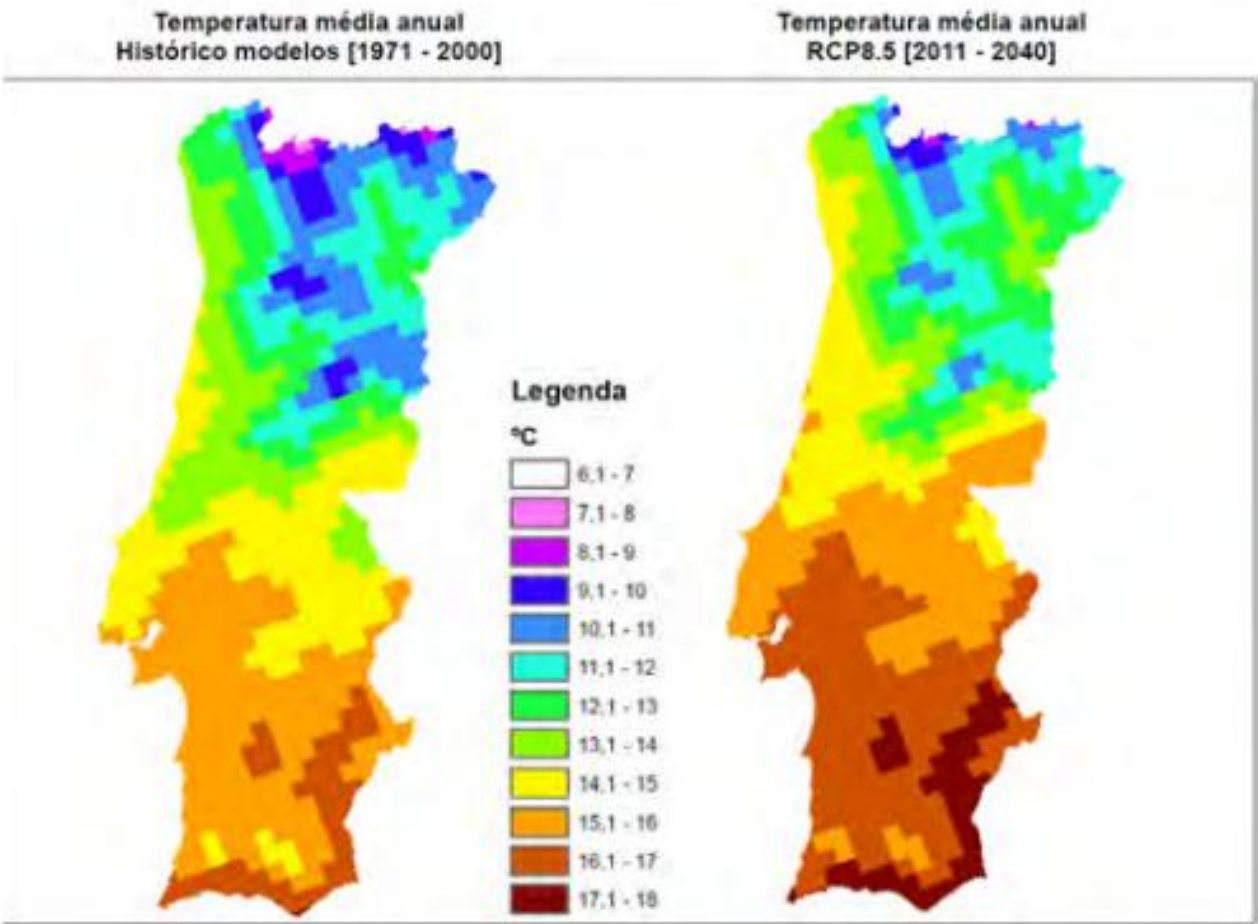
Fonte: IPMA (2018)

Potential hazard of rural fire



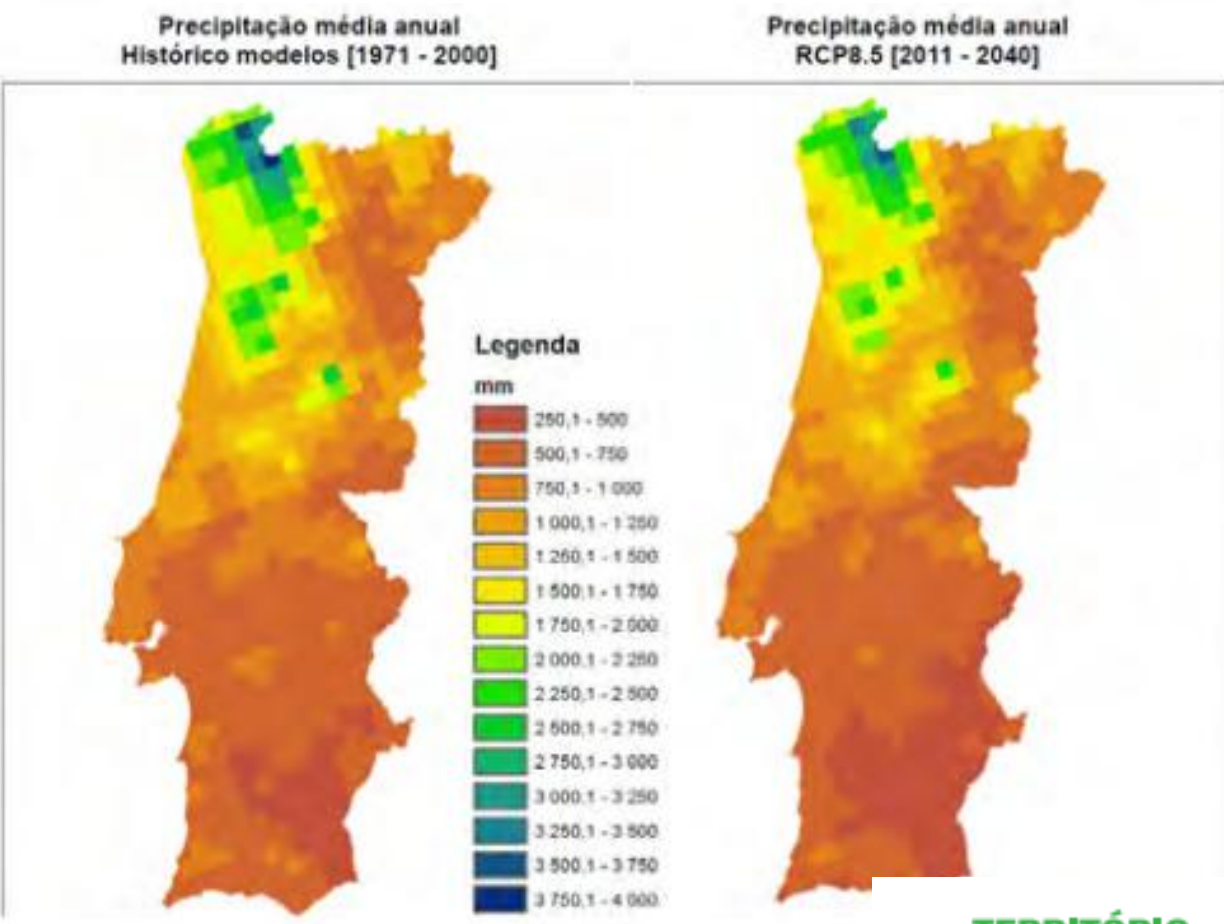
pilot action background- National Spatial Planning Policy Programme (PNPOT, 2019)

Temperature (projected annual average)



Fonte: Portal do Clima, 2017

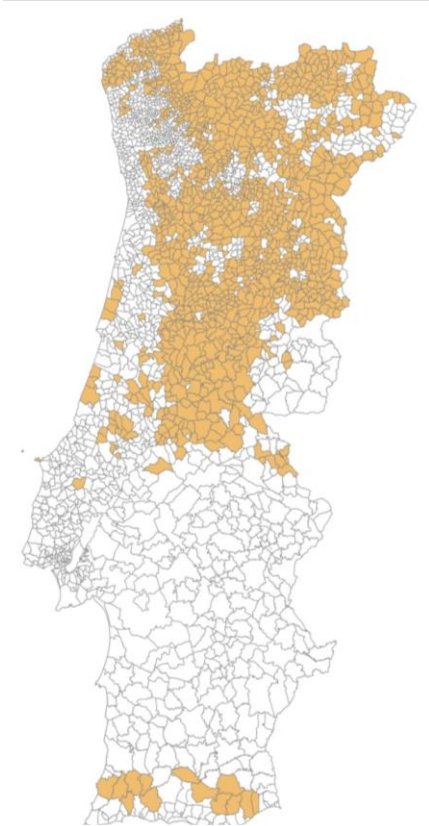
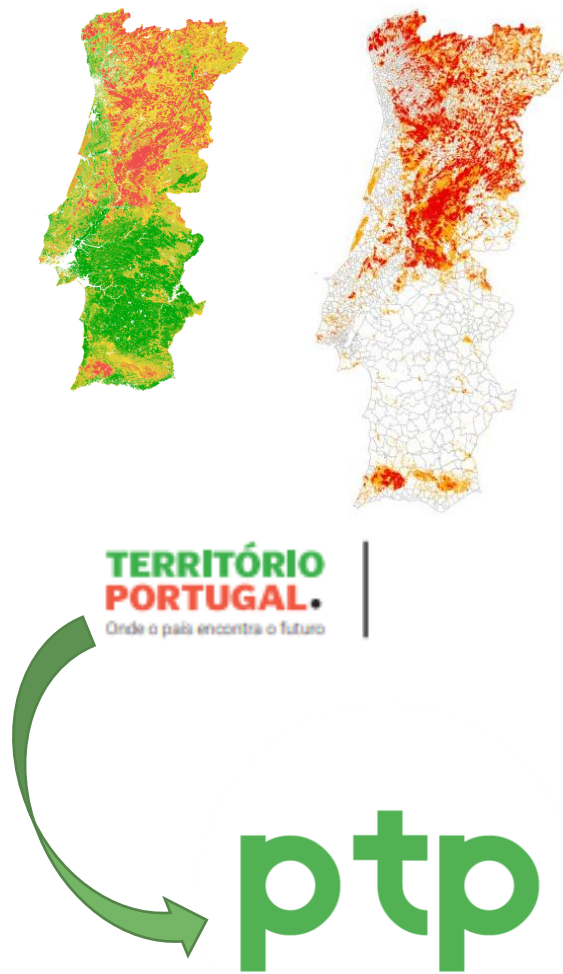
Precipitation (projected annual average)



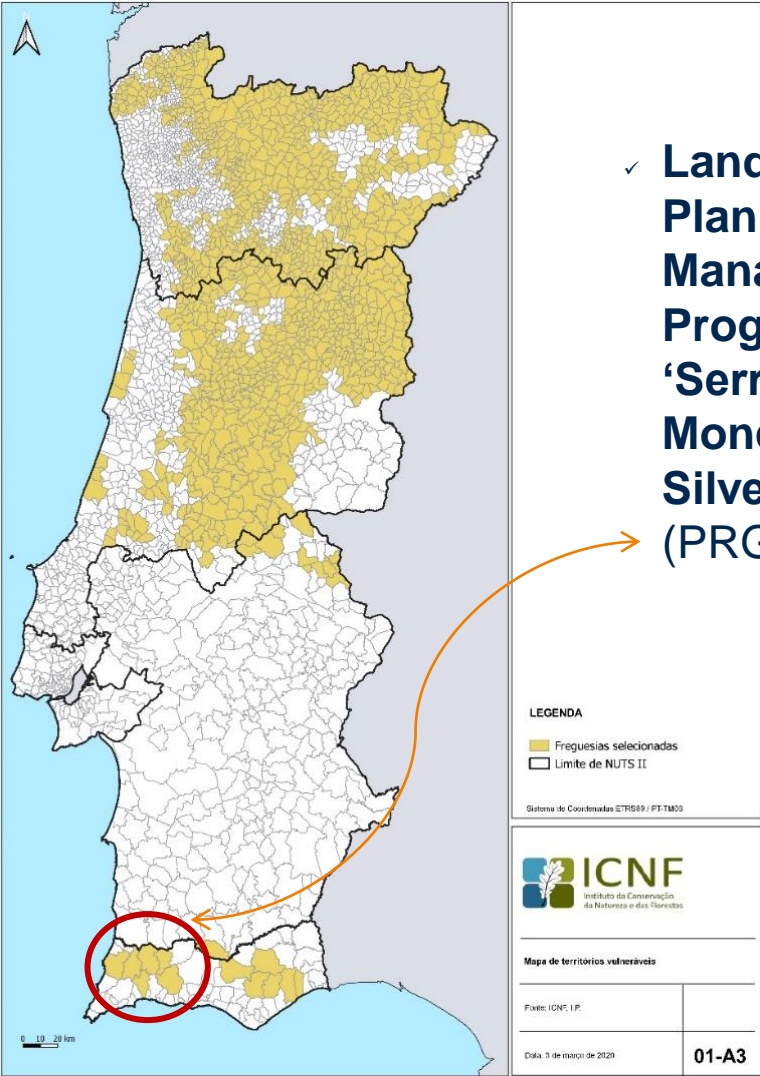
Fonte: Portal do Clima, 2017

pilot action background- Landscape Transformation Programme (PTP, 2020)

The Most vulnerable Territories



- Vulnerable Territories – Wild fire risk- High and very high
- Over 40% of Forestry land use



✓ Landscape Planning and Management Programme of ‘Serras Monchique & Silves’ (PRGP, 2020)

LEGENDA
Freguesias selecionadas
Limite de NUTS II



Mapa de territórios vulneráveis

Fuente: ICNF, I.P.

Diãa: 3 de março de 2020

01-A3



pilot action in a nutshell : background

- As a policy response In recent years, **wildfires** in Portugal regularly affected rural areas subject to socio-demographic and economic decline processes
- the Portuguese government adopted a **political measure** aiming to “value” the territory through landscape transition and the revitalisation of forest territories
- This policy measure was developed and is currently being implemented within the framework:
 - ✓ **National Spatial Planning Policy Programme** (PNPOT, 2019)
 - ✓ **Landscape Transformation Programme** (PTP, 2020)
 - ✓ **Landscape Planning and Management Programme of ‘Serras Monchique & Silves’** (PRGP, 2020)

#TA2030 PILOT ACTION

1

climate change adaptation and resilience through **landscape transition**



pilot action in a nutshell : highlights

develop experimental integrated approaches for vulnerable rural areas in decline

- **Slow Planning & Governance** : supported in a long term commitment at all levels of governance, based on better regulations and implementation plans and better and articulated EU and national funding mechanisms

rationale & link to the Territorial Agenda

- **Adaptation & Resilience** : focus on integrated climate change adaptation and environmental, social and economic resilience, through planning and designing actions for new landscapes
- **TA2030 Priorities** : closely related to the priority on **Functional Regions** under the objective Just Europe and the priority on **Healthy Environment** under the objective Green Europe

#TA2030 PILOT ACTION 2

climate change adaptation and resilience through **landscape transition**

Focuses on thematic priorities both at European and national levels:

- **Climate change adaptation and territorial resilience**
- **Ecosystem services and the green economy**
- **Endogenous resources and natural capital**
- **Governance and stakeholder's engagement**

→ Meeting the EU initiative
Long-term Vision for Rural Areas

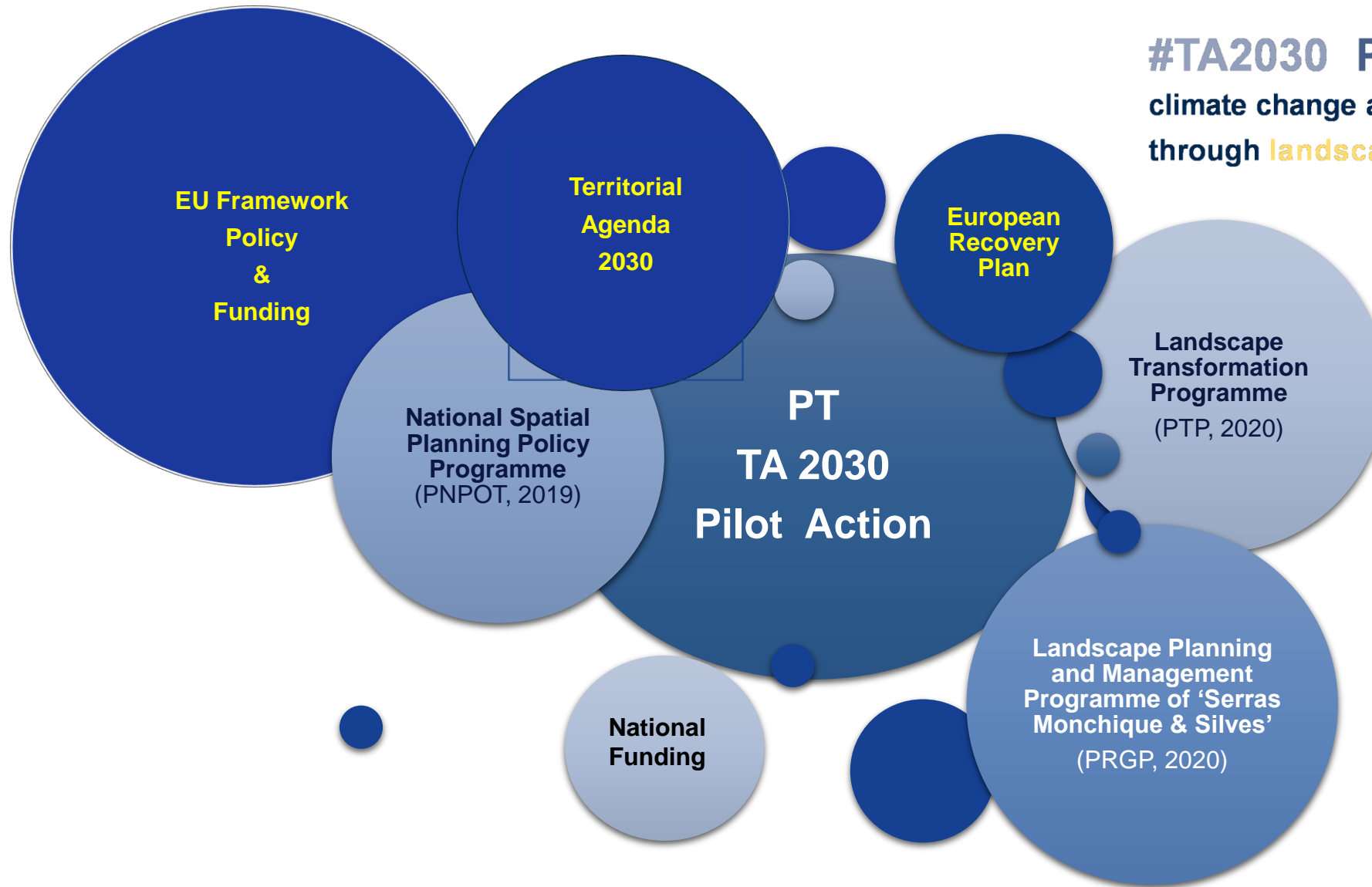
pilot action : 4 thematic priorities

- **INTEGRATING** climate change adaptation and resilience
→ **Territories** need to be better prepared. Risks such forest fires, loss of biodiversity and reduction in agricultural productivity become higher and more costly
- **FOSTERING** ecosystem services and the green economy
→ **Biodiversity** must be considered as a heritage component and an asset in danger of irreversible losses, which must be defended and protected
- **MOBILIZING** endogenous resources and improving natural capital valorization
→ **Natural capital** must be pursued as a differentiating and enhancing factor
- **BUILDING** innovative processes of governance and stakeholder's engagement
→ **Landscape transition** takes time... **let's start!**

→ This pilot-action also integrates the work in progress within the framework of the ESPON project **Territorial Impacts of Natural Disasters (TITAN)**

#TA2030 PILOT ACTION

climate change adaptation and resilience
through **landscape transition**



pilot action : next steps

- **Time planning** : implementation phase is in preparation, starting in 2021
- **Resources** : under discussion, would mainly cover costs for conferences, workshops, traveling and translations
- **Indicative partners** :
 - ✓ **UE**
partners from other countries are welcome to join the pilot action *inter alia* from Croatia, Greece and Spain (tbc)
 - ✓ **Portugal**
Stakeholders from different administrative levels and sector policies, regional and local stakeholders and universities (»10)
- **Lead stakeholder** : Portuguese Ministry of Environment and Climate Action

#TA2030 PILOT ACTION 4

climate change adaptation and resilience through **landscape transition**



pilot action: next steps

- **Climate finance** is the theme that may bring more interest for our European partners
- **Joint search for innovative solutions:**
 - ✓ Answering climate change through active landscape 'redesign'
 - ✓ Valuing ecosystem services and promotion of a 'new rural economy'
 - ✓ Linking policy, funding and national and european instruments in the fields of forestry and agricultural policy to territorial cohesion and spatial planning
 - ✓ multi-level, cross-sectoral and multi-scale governance
- **Spain and other countries** can join us as an observer/sparring partners or a partner with a **case study**







#TA2030 PILOT ACTION

**climate change adaptation and resilience
through landscape transition**

thank you !